

An aerial photograph of a coastline. A large, white, foamy wave is crashing over a dark, rocky shore on the left side of the frame. The water in the foreground is a mix of deep blue and light turquoise, with intricate patterns of white foam and ripples. The sky is a clear, bright blue.

**ROMERIL**

**Nicholas Romeril**  
**Les Charrieres, Les Charrieres de Bonne Nuit,**  
**Bonne Nuit, St John, Jersey JE3 4DD**

**Email: [nick@nicholasromeril.com](mailto:nick@nicholasromeril.com)**  
**Mobile: +44 (0)7797 759867**

**[www.nicholasromeril.com](http://www.nicholasromeril.com)**

*Free To Jump*

tension  
free spirit  
warm air rush  
cold immersion  
muffled existence  
suspended particles  
embracing gravity

Cover - **Roller (Detail)** (2015) | (150 x 180 cm) | Oil on Linen  
Opposite - **Free to jump** (2015) | (110 x 110cm) | Oil on Linen

All poems by William Romeril





**Cold Immersion** (2015)  
150 x 150cm  
Oil on Linen



**Black Sea** (2014)  
130 x 130cm  
Oil on Linen



**Muffled Existence** (2015)  
150 x 150cm  
Oil on Linen



Deep Blue (2012) | 126 x 160cm | Oil on Canvas



Fish Wave (2015) | 104 x 170 x 27cm | Stainless Steel, Oil Paint on Sculpted Board  
*Collaboration with Danny Romeril*



*Raw Force*

raw force  
on course  
to th' unwavering wall  
uncaring squall  
the coast is battered  
the swells are shattered



*Opposite* A Safe Distance (2015) | 100 x 80cm | Oil on Linen  
*Above* Dancing at Le Pulec (2015) | 100 x 120cm | Oil on Linen

*The Precarious Balance*

the precarious balance  
radiating heat  
in the granite maze  
the shadows dance  
the beat of the wind  
a salty haze  
in the granite maze

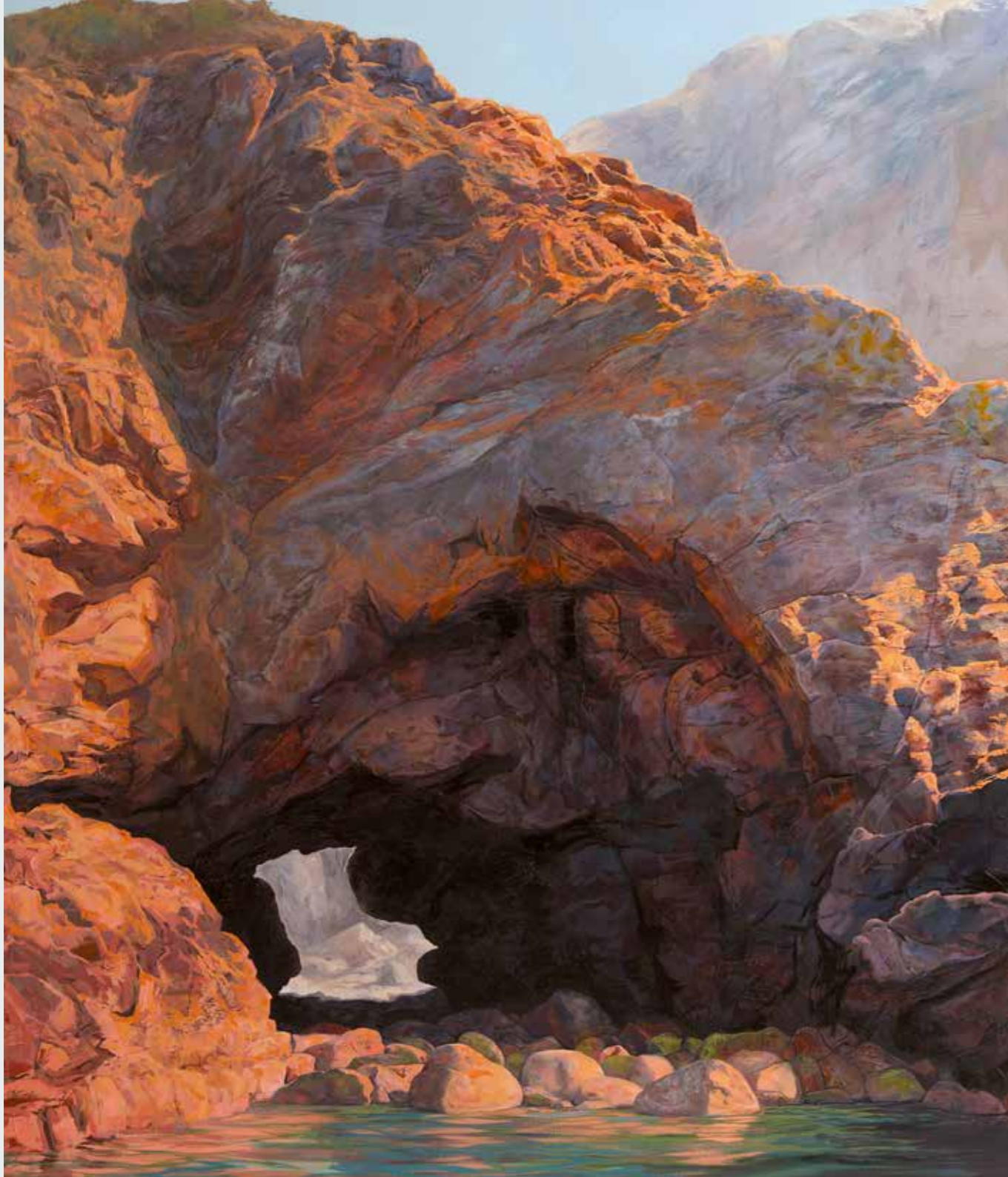
*Opposite top* - Radiating Heat (Extended) (2015) | 36 x 65 x 8cm | Oil on Slate  
*Opposite below* - Shadows Dance (Extended) (2015) | 36 x 65 x 8cm | Oil on Slate





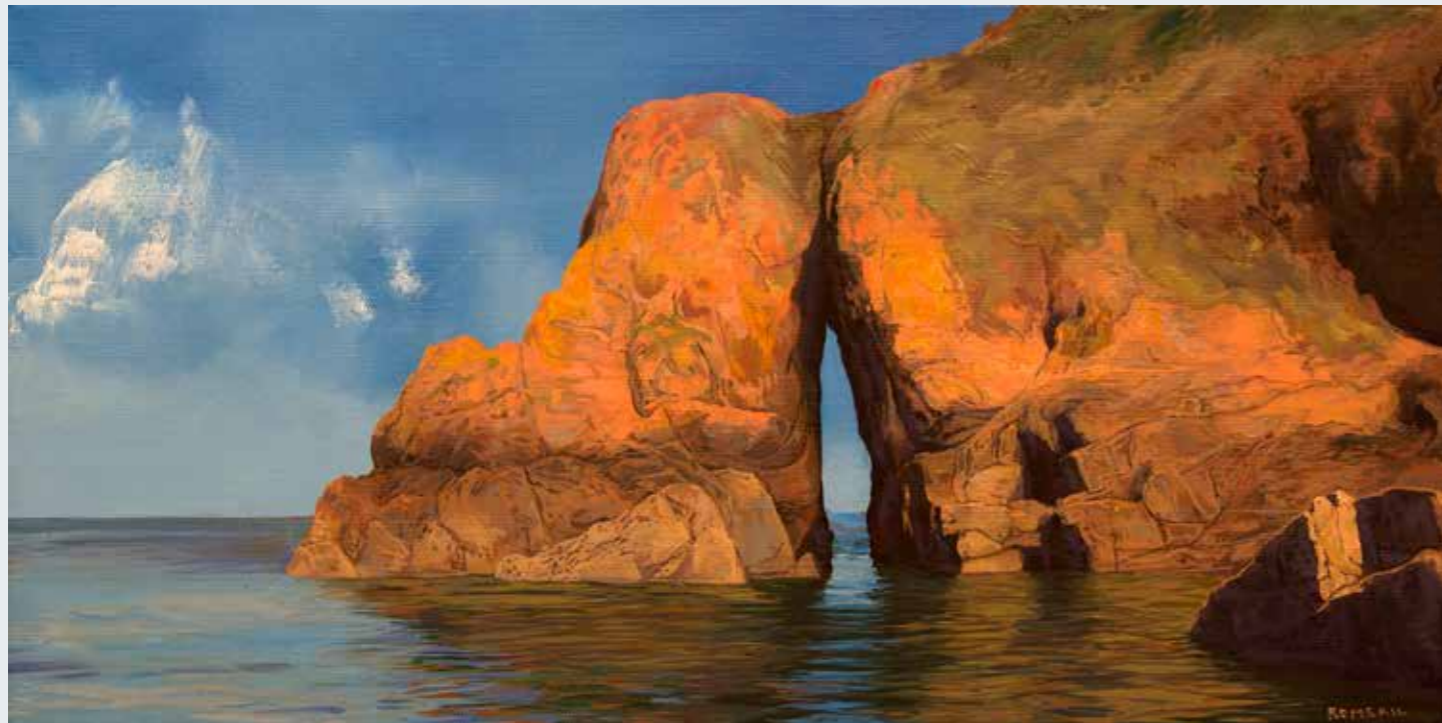
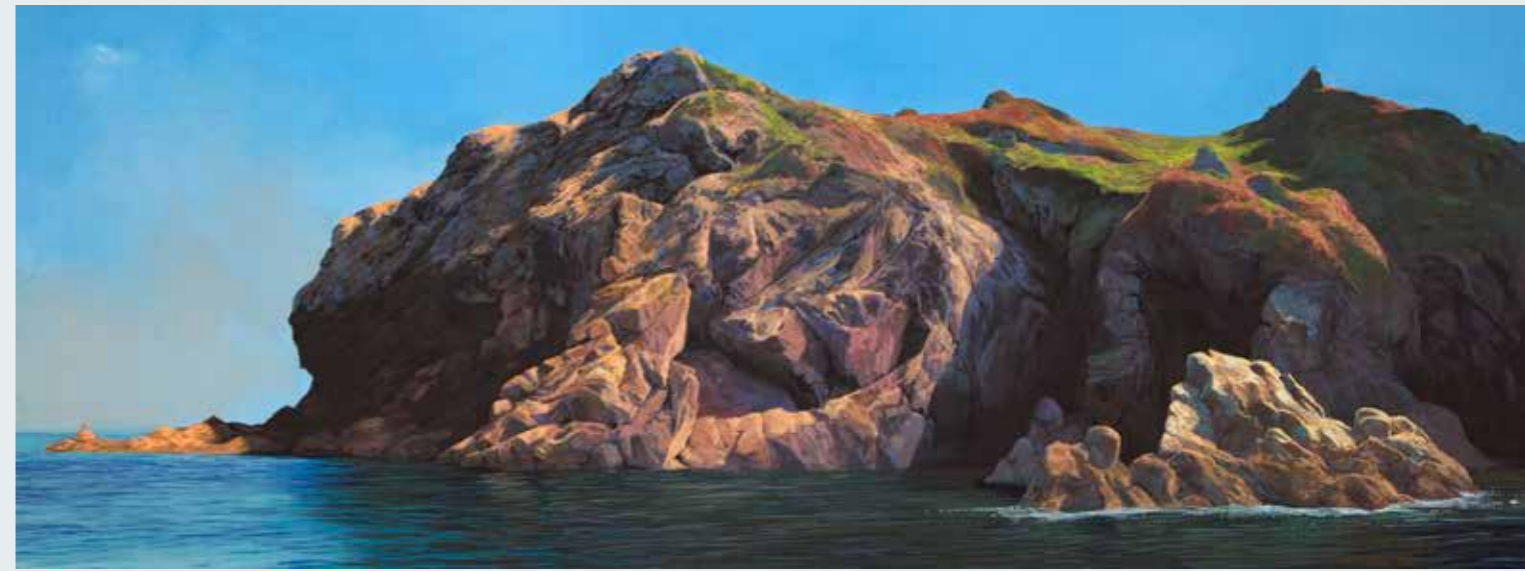
In The Granite Maze (Extended) (2015) | 65 x 135 x 10cm | Oil on Slate





*The Privileged View*

the privileged few  
who see  
the sacred hideaways  
tiny hidden bays  
a beach  
just out of reach  
invisible to all  
but to the privileged few



*Opposite Top* - **Privileged Few** (2014) | 25.5 x 51cm | Oil on Linen

*Opposite below* - **Full Sun** (2014) | 25.5 x 51cm | Oil on Linen

*Above* - **Just Out Of Reach** (2015) | 31 x 82cm | Oil on Linen

*Bottom left* - **Stack** (2015) | 90 x 60cm | Oil on Linen

*Bottom right* - **Alone** (2014) | 20.5 x 25.5cm | Oil on Canvas



Secret Hideaways (2015) | 60 x 90cm | Oil on Linen

*The Islands Of Grass*

the islands of grass  
seas of sand  
allowing all to pass  
an eternity at hand  
sand blown smooth  
always on the move  
no memory of the past



Above - **Lunar Light** (2013) | 70.5 x160cm | Oil and Artist's Hair on Linen

Bottom - **Storm Coming** (2014) | 80 x178cm | Oil and Artist's Hair on Linen



Still (2015) | 90 x 180cm | Oil and Artist's Hair on Linen



*Above* - **Private Dune** (2015) | 80 x 150 cm | Oil and Artist's Hair on Linen

*Right* - **Golden Sands** (2014) | 81 x 161cm | Oil and Artist's Hair on Linen





**Ferns** (2015) | 180cm x 55cm x 55cm (size variable) | Stainless Steel  
*Collaboration with Neil McKenzie. Photographs by Danny Romeril.*



**Holding Breath** (2014) | 100 x 58 x 52cm | Stainless Steel

## NICHOLAS ROMERIL // Biography

### // About

Nicholas Romeril was born 11 October 1967 in Jersey, Channel Islands and he currently lives and works in Jersey.

### // Solo Shows

**2015** Free to Jump. Solo exhibition CCA Galleries International, Jersey. Palm Beach Art and Antiques Fair. Los Angeles, California. USA. Chris Beetles Gallery.

Palm Beach Art and Antiques Fair, Miami, Florida. USA. Chris Beetles Gallery.

**2014** Beachcombre. Solo exhibition at Chris Beetles Gallery, London. Open Studio exhibition. Artists private space. Jersey

**2013** Bright Light, Solo Exhibition at Thomas Dutoit Galerie, Switzerland.

Open Studio exhibition. Artists private space. Jersey

Sand, Surf, Stone. Solo exhibition at Chris Beetles Gallery, London.

**2012** Solo exhibition of new paintings at Clos de Charriere, show home for Antler Homes. Jersey.

Common Terns KEEY-YAH. 2.5m high powder coated aluminum sculpture depicting a flock of feeding terns. Clos de Charriere, Jersey.

Horse Shoe Horse Head. Sculpture made from used horse shoes. Les Etabl'yes, St Ouen, Jersey.

**2011** Solo exhibition of new paintings, prints and sculptures at Galerie des Sablons, St Malo, France.

**2010** Solo exhibition of 38 new paintings and 5 sculptures at Thomas Dutoit Galerie, Switzerland.

'Herd' an exhibition of the working drawings and prints in conjunction with the release of a film by Alison Richards, which documents the process used to create the exterior frieze for the Jersey Dairy.

Unveiling of the 'Herd' installation at Jersey Dairy. Twelve massive exterior paintings of cow portraits on to mirror polished stainless steel. 2.5m x 14m. Nicholas Romeril was presented to Her Royal Highness The Princess Royal during the unveiling.

### // Education

**1991-93** MA Fine Art (Printing), Camberwell College of Art and Design, London

**1988-91** BA (Hons) Fine Art (Painting). Camberwell College of Art and Design, London

**2008** Nicholas Romeril at David Hick Interiors, Jersey\*. Open Studio. Artist's private space, Jersey.

**2007** Tonic. East West Gallery, Notting Hill, London. New Paintings. An exhibition of new work to raise funds for Durrell Wildlife Conservation Trust in association with Cazenove Capital Management, Jersey.

**2006** Les Minquiers, Studio 18 Gallery, Jersey.\*

**2005** Open Studio, Artists private space, Jersey.\* Herd of Charing Cross? Large scale public art event in the streets of St Helier, Jersey\*.

**2004** Secrets. East West Gallery, Notting Hill, London.\*

**2003** Silence. Studio 18 Gallery, Jersey.\*

**2002** Vessels. An exhibition of paintings on ceramic. Jersey Pottery, Jersey.

**2001** Hot Spells. East West Gallery, Notting Hill, London.

**2000** Here & Now. Studio 18 Gallery, Jersey.\* White Heat. Coach House Gallery, Guernsey.

**1996** Calm Charm. Studio 18 Gallery, Jersey.

**1994** Star Brewery Gallery. Lewes, East Sussex.

**1993** People in Place. Studio 18 Gallery, Jersey.

**1991** Scratching in the Dust. Studio 18 Gallery, Jersey.

### // Private & Corporate Collections

Bromer Art Collection (Switzerland), Jersey Museum, Perdurance Ltd, Rathbones Ltd, Jersey Diary Ltd, JT, The Atlantic Hotel, Mark Jordan on the Beach, Ernst & Young, Royal Bank of Wales, Mourants Bedell, Cristin Deloitte & Touche, La Conte & Wright Ltd, UBS Trustees (Jersey), Voisin.

Private Collections in UK, Norway, Spain, France, Ireland, U.S.A., Canada, Switzerland, Germany and Hong Kong.

### // Selected Group Exhibitions

**2009** Nicholas organises the first Red Dot art fair at the Grand Jersey.

**2008** Romantics in the Channel Islands. Jersey Heritage Trust, Jersey Museum. A comprehensive survey of contemporary and historic paintings inspired by the sea around the Channel Islands.

**2004** Group Show. Maritime Museum, Jersey. Group Show. Royal Overseas League, London. Mixed Show. Rostra Gallery, Bath.

**2000** National Art Collection Fund Exhibition, Jersey Museum.

**1998** Group Show. East West Gallery, London.

Shortlisted for the Royal West and Bath Landscape Painting Prize.

**1997** National Art Collection Fund Exhibition, Jersey Museum.

**1996** Group Show. East West Gallery, Notting Hill, London.

Artichoke Summer Show. Barbican Centre, London.

**1994** The Royal West Academy Open Print Exhibition, Bristol. London Institute South African Touring Exhibition, South Africa.\*

Artichoke Annual Print Exhibition, London.

**1993** The Bradford Open Print Exhibition, Bradford.\* Ten Years of the Jersey Arts Centre. Berni Gallery, Jersey.

**1991** Going to Press. The Pearoom Gallery, Lincolnshire.

The Edinburgh Gallery, Scotland.

**1990** A View of the New. The Royal Overseas League, London.\*

Contemporary View. Royal College of Art, London. Prize Winner.\*

*\*A catalogue has been published for these exhibitions*



*A special thank you  
to Voisin law*